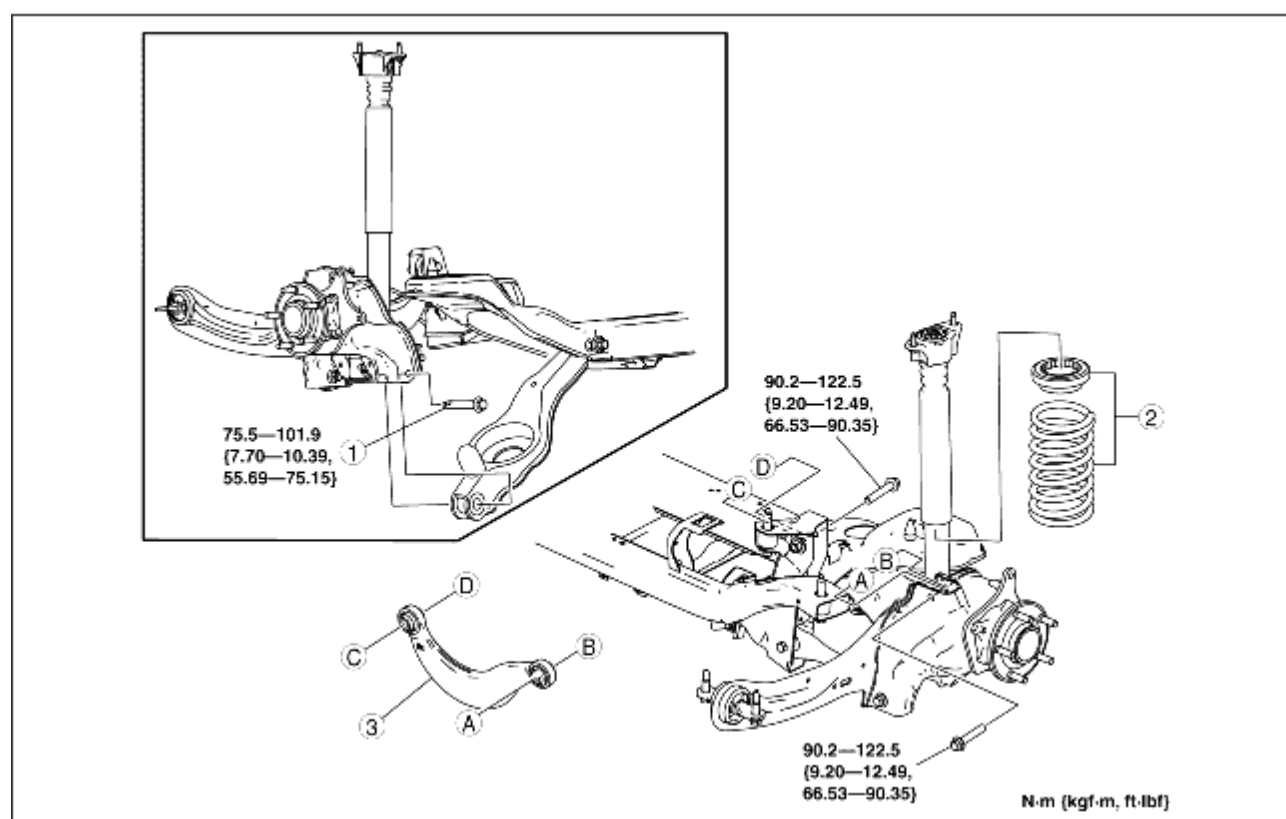


REAR UPPER ARM REMOVAL/INSTALLATION

B3E021428210W01

1. Remove the rear auto leveling sensor. (See [AUTO LEVELING SENSOR REMOVAL/INSTALLATION](#).)
2. Remove in the order indicated in the table.
3. Install in the reverse order of removal.
4. Inspect the wheel alignment and adjust it if necessary.

(See [REAR WHEEL ALIGNMENT](#).)



B3E0214 W008

1	Rear lower arm outer bolt (See Rear Lower Arm Outer Bolt Removal Note .)
2	Rear coil spring component (See REAR COIL SPRING REMOVAL/INSTALLATION .)
3	Rear upper arm (See Rear Upper Arm Installation Note .)

Rear Lower Arm Outer Bolt Removal Note

1. Support the rear lower arm using a jack.

2. Loosen the rear lower arm inner bolt.
3. Remove the rear lower arm outer bolt.

Rear Upper Arm Installation Note

1. Install the rear upper arm so that IN mark is facing toward the inside of the vehicle.

